

SC Self Contained Electronic Locking System

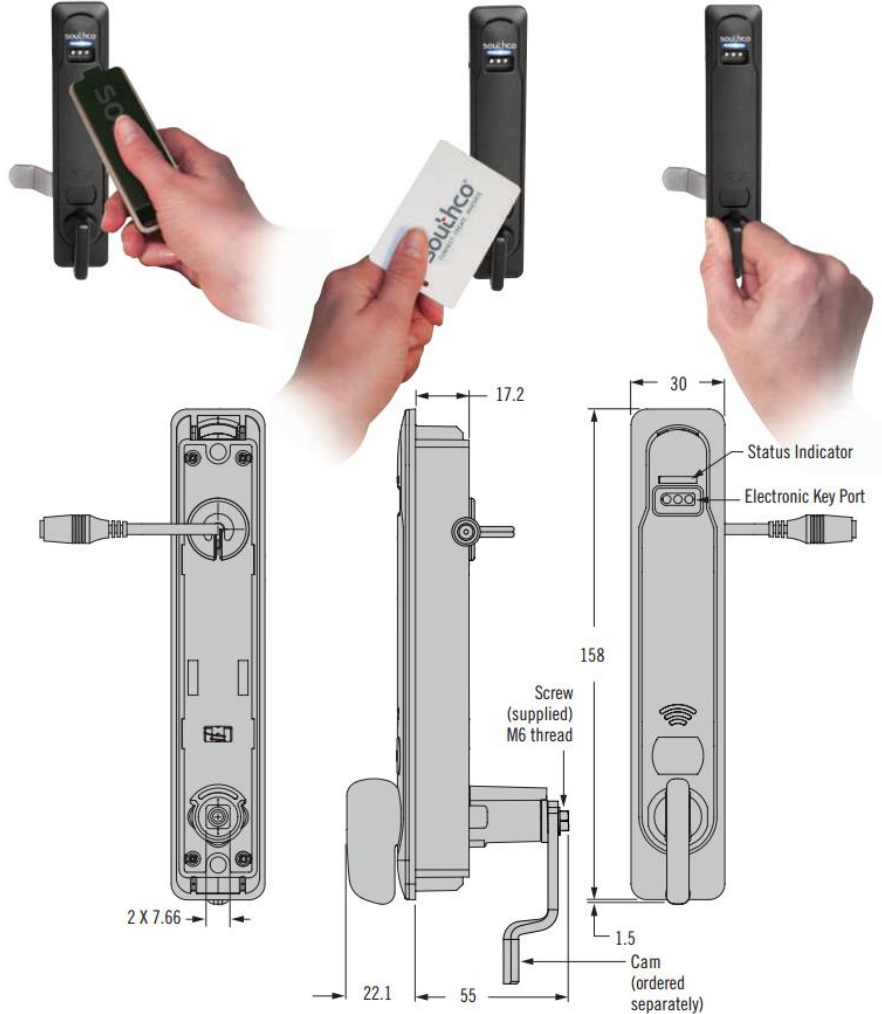
Electronic access (RFID version)

Features

- No wiring required
- Battery operated (3 AA)
- Accepts MIFARE® Classic, MIFARE® Plus, MIFARE® DESFire® and HID® smart cards**
- Up to 20 unique user cards or user keys per lock
- Vertical or horizontal user orientation
- Manager key with 9 V battery for electrical override
- Custom colours available
- Order latch and cam separately

Material

- Housing, trim plate, mounting cup: PC/ABS; Flammability rating: UL94-V0
- Knob: Zinc alloy, powder coated
- Screw, snap ring: Steel



Latch Assembly Part Number (no cam)

SC - 20 - 100 **D** - 10*

D Door Thickness Range

- 0 1 - 15 (0.04 - 0.59)
- 1 15 - 25 (0.60 - 0.98)

*Note: Remove '10' for latch without Southco logo.

** MIFARE Classic, MIFARE Plus, MIFARE DESFire are trademarks of NXP B.V.
HID is a registered trademark of HID Global Corp.

D Door Thickness			
	Door Thickness Range	Mounting Screw ¹ M5 X 0.8 thread	Cup Height
D = 0	1 - 10 (0.04 - 0.39)	Short	20 (.8)
	10 - 15 (0.40 - 0.59)	Long	
D = 1	15 - 20 (0.60 - 0.79)	Short	8 (.3)
	20 - 25 (0.80 - 0.98)	Long	

¹Note: Two short and two long mounting screws are provided with each latch assembly.

Cams, RFID cards, and keys ordered separately.

We are proud to be Southco's authorized distributor of over 20 years

SC Self Contained Electronic Locking System

Electronic access (keypad version)

Features

- Simple keypad access
- Battery operated (3 AA)
- Up to 20 unique user codes of any combination (User keys or PINs) for "Key Managed" model
- Vertical or horizontal orientation (specify when ordering)
- Custom colors and logos available[^]
- Manager key with 9 V battery for electrical override
- Rod systems available for multi-point latching
- Order latch and cam separately



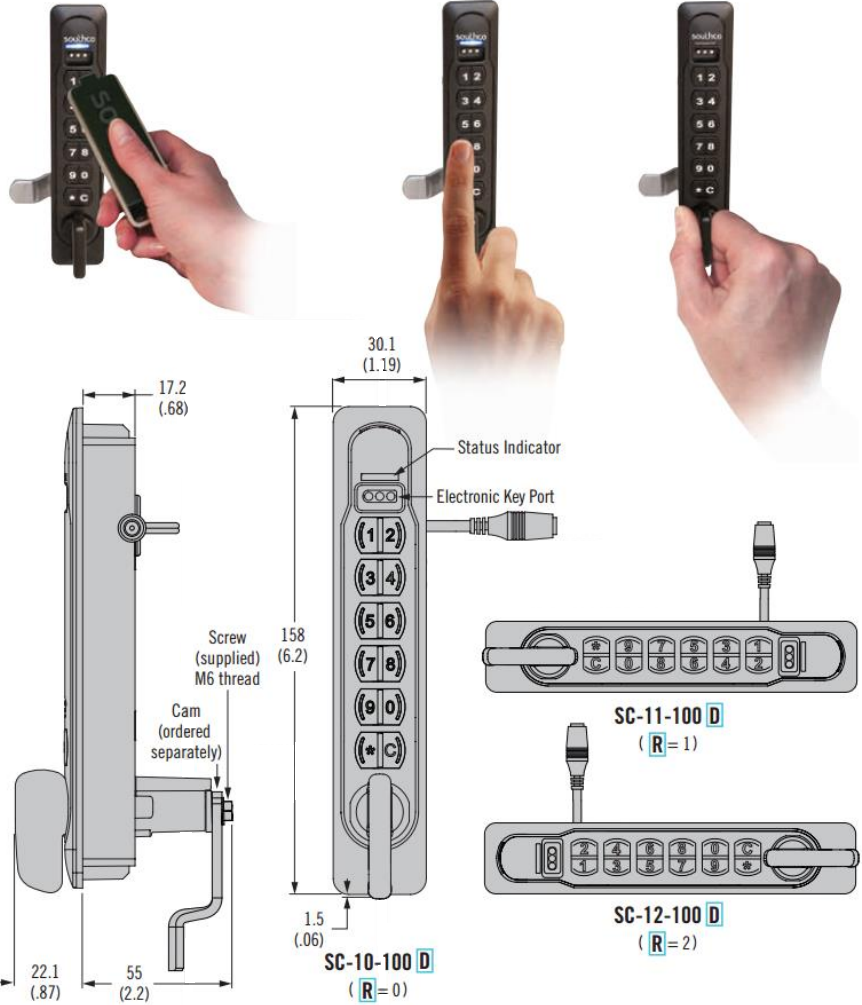
SWINGHANDLES

Material

- Housing, trim plate, mounting cup: PC/ABS (flammability rating UL94-V0)
- Knob: Zinc alloy, powder coated
- Screw, snap ring: Steel



[^]Contact Gripwell Sales for details



Latch Assembly Part Number (no cam)

- D** Door Thickness Range
- 0 1 - 15 (0.04 - 0.59)
 - 1 15 - 25 (0.60 - 0.98)

SC - T R - 100 D - 10*

- T** Type
- 1 Key managed
 - 5 Code managed
- R** Orientation
- 0 Vertical
 - 1 Horizontal, knob left
 - 2 Horizontal, knob right

*Note: Remove '10' for latch without Southco logo.

D Door Thickness			
	Door Thickness Range	Mounting Screw ¹ M5 X 0.8 thread	Cup Height
D = 0	1 - 10 (0.04 - 0.39)	Short	20 (.8)
	10 - 15 (0.40 - 0.59)	Long	
D = 1	15 - 20 (0.60 - 0.79)	Short	8 (.3)
	20 - 25 (0.80 - 0.98)	Long	

¹Note: Two short and two long mounting screws are provided with each latch assembly.
Cams and keys ordered separately.

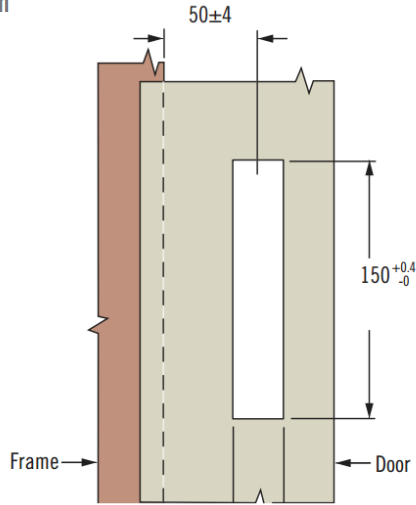
southco®

We are proud to be Southco's authorized distributor of over 20 years

SC Self Contained Electronic Locking System

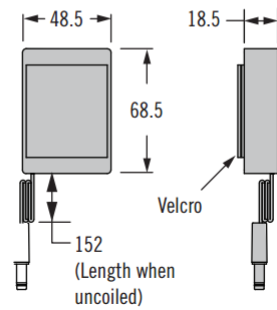
Electronic access

Installation



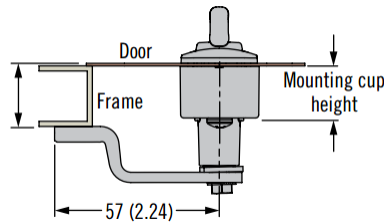
Battery Box

(Mount inside the door, included with each latch assembly)



Grip Measurement

Grip
(Measured from the front of the door to the latching surface)



Cam Part Numbers (Order Separately)	
Cam Part Number	GRIP mm(in)
SC-5000	42.5 (1.67)
SC-5002	40.5 (1.59)
SC-5004	38.5 (1.52)
SC-5006	36.5 (1.44)
SC-5008	34.5 (1.36)
SC-5010	32.5 (1.28)
SC-5012	30.5 (1.20)
SC-5014	28.5 (1.12)
SC-5016	26.5 (1.04)
SC-5018	24.5 (.96)
SC-5020	22.5 (.89)
SC-5022	20.5 (.81)
SC-5024	18.5 (.73)
SC-5026	16.5 (.65)
SC-5028	14.5 (.57)
SC-5030	12.5 (.49)
SC-5032	10.5 (.41)
SC-5034	8.5 (.33)
SC-5036	6.5 (.26)
SC-5038	4.5 (.18)
SC-5040	2.5 (.10)
SC-5042	0.5 (.02)

How to Order

1. Select latch assembly
2. Determine grip
3. Order cam separately based on grip dimension
4. Order one programming key per site (*not required for code managed keypad*)
5. Order manager keys as needed
6. Order RFID cards, labels or user keys as needed

Note: Battery box included. Requires 3 AA Batteries (not included)

Electronic Key Part Numbers (Order Separately)

Part Number	Description
SC-A10-10	Programming Key Used to enroll Manager keys and for Express Registration
SC-A20-10	Manager Key Used to enroll User Codes, User Keys and RFID cards. Also provides electrical override.
SC-A30-10	User Key Provides quick one touch access

Contact Gripwell Sales for custom colour / logo options

RFID Card and Label Part Numbers (Order Separately)

Part Number	Description
EA-C3-101-9	Card, RFID, 13.56MHz, MIFARE® Classic, 0.8 (.03) Thick, Slot, Logo**
EA-C3-300-9	Label, RFID, MIFARE® Classic, 4 BYTE UID (Ø28mm, .2mm thick)

Note: Detailed instructions regarding system set-up and operation are included with each latch assembly.

** MIFARE and MIFARE Classic are trademarks of NXP B.V.



We are proud to be Southco's authorized distributor of over 20 years